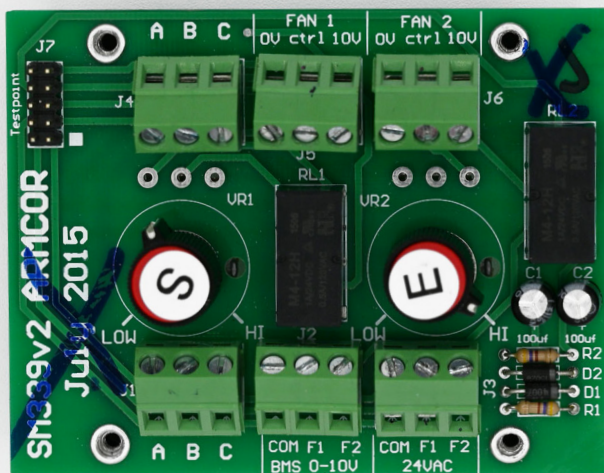


# Spare Parts Handbook



Manufactured  
by Armcor





Part Name: SM 339V2 to V5 Fan Speed Controller

#### Product description:

The SM 339v5 Fan speed controller is available in Spare Parts upon request. It is not the same as the new SM339V6. V5 cards are kept in stock for needed replacements.

Available as spare parts only.



## Part Name: SM 339V6 Fan Control Card

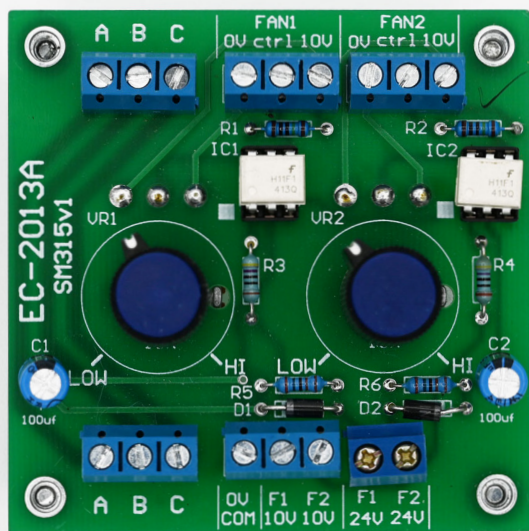
### Product description:

Fan card used to regulate the airflow of EC Fans. Can be used with either 24vac OR 0-10vdc inputs. Speed control of the fans can be done separately if required. This card does not have terminals for the fan fault.

24vac operation the fans will be set by the pots.

**Note:** Current Model supersedes all other fan cards and can be used as a replacement for all older models.





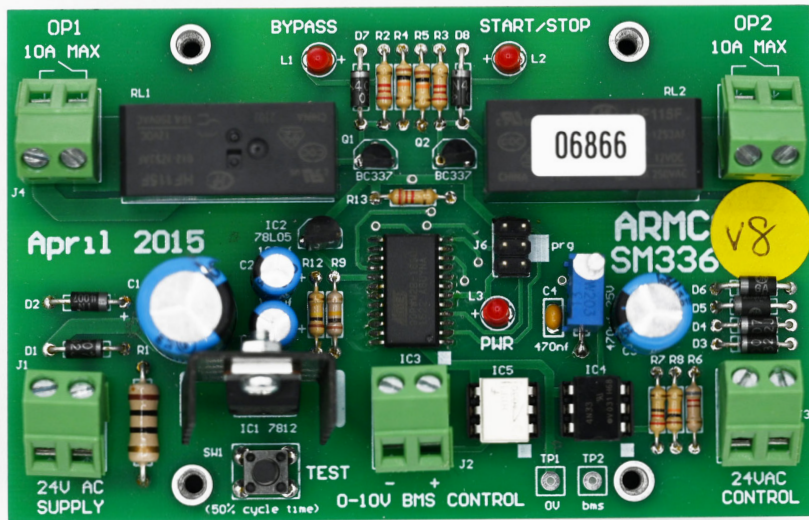
Part Name: SM 315v1 Fan Control Card

### Product description:

The SM 315v1 is now replaced with the SM 336v6 which uses the same wiring connections and mounting holes.

### Superseded Model





## Part Name: SM336v8 Digital Compressor Card

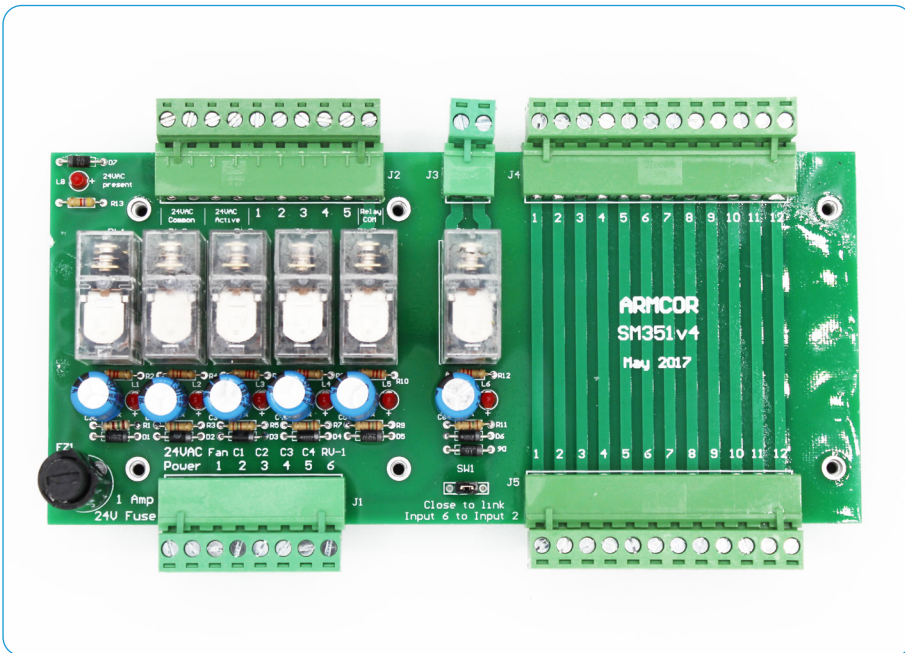
### Product description:

The SM 336V8 is used to control digital compressors loading and unloading through a 0-10vdc capacity control through an external BMS

SM 336V8 Card has an oil return cycle which activates 10 minutes after starting and reactivates every two hours of operation. This ensures correct oil return for the compressor.

### Current Model

**Note:** The SM 336v9 is available without the oil return cycle and should only be used with approval from Armcor.

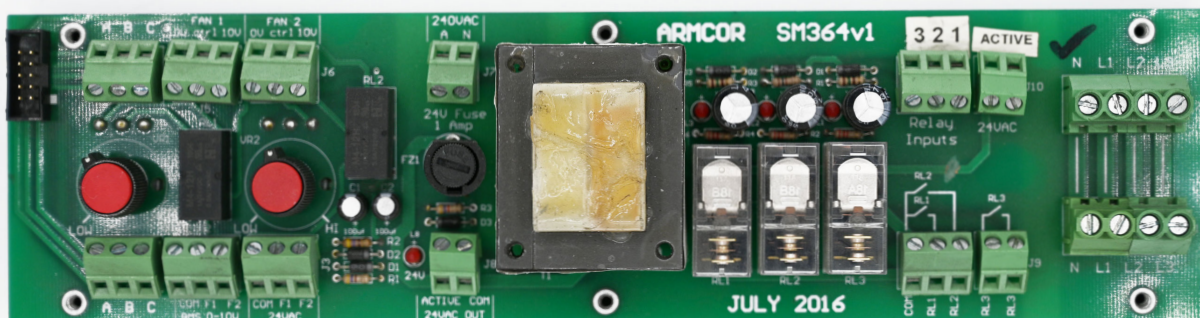


## Part Name: SM 351v4 Control Relay Board

### Product description:

The SM 351 Card has been superseded and is only available as a spare part. This card is used to separate the input signals from the controller to the input signal to the fans, compressor and reversing valve. This card has 6 inputs and 6 outputs all for 24vac only.

Current available as spare parts.



Part Name: SM 364v1 Relay Board with 24v Transformer

**Note:** Discontinued relay board and not available as spare parts.





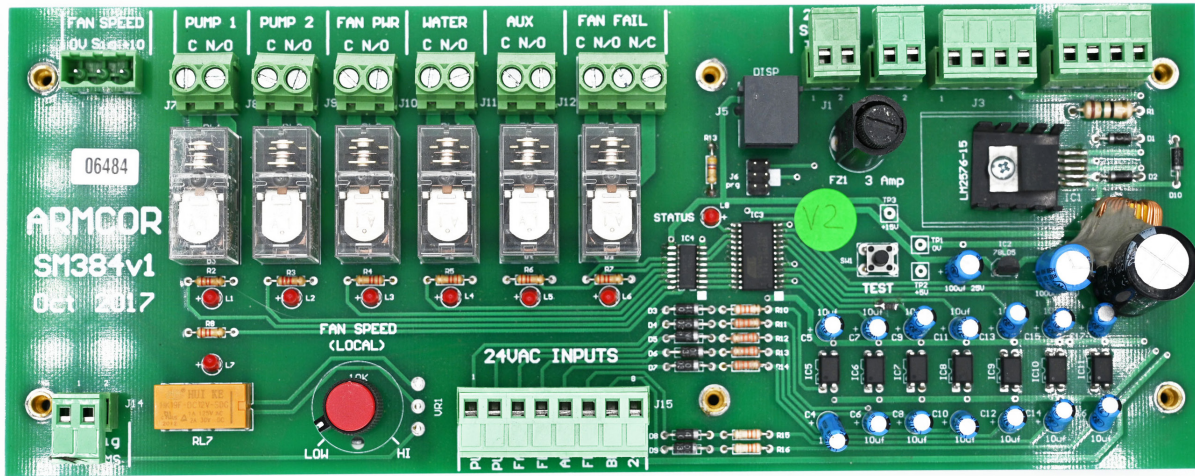
## Part Name: DFT 880 Defrost Controller

### Product description:

The DFT 880 Defrost Controller is used to control ice build-up on the condenser coil on the heating cycle. It comes with a defrost sensor which is located on the discharge line of the condenser coil. Remove the link as all reversing valve coils used by Armcor are 24vac.

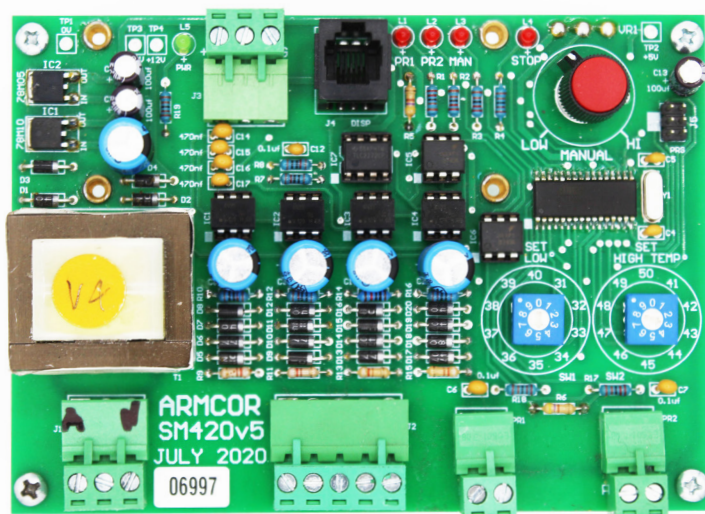
Adjustable time and temperature sensors make this controller very versatile. LED lights indicate the current mode it is operating in.

### Current Model



Part Name: SM384V1 Relay Board for Indec Cooling Units

**Note:** Discontinued relay board and not available as spare parts.



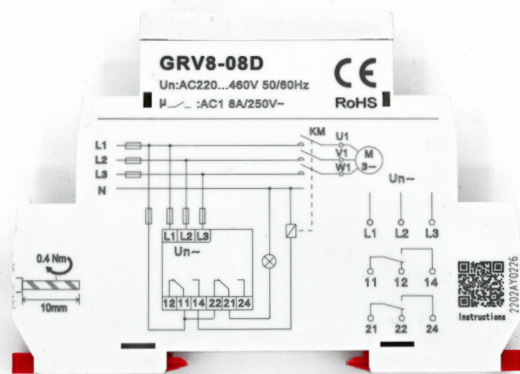
Part No.: SM 420v5

### Product description:

The SM 420v5 is used to control EC condenser fans by the temperature of the Liquid line. It can be used with up to two compressors. A product application information sheet for this product is available on our web site under Components/Condenser Fan Controller SM 420 which explains the operation in more detail.

### Current Model



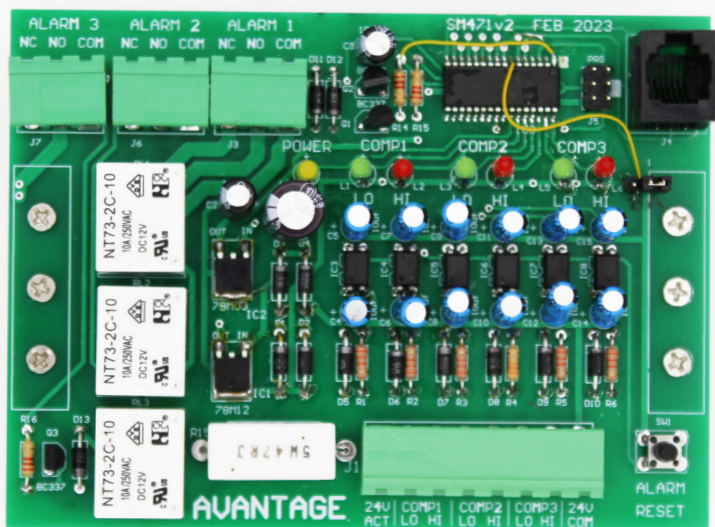


**Part Name:** GRV8-08D Phase Failure Relay

### Product description:

This is an alternate part used for the WEG RMW17, installed on all units with compressors to ensure correct phase rotation and phase failure or voltage drop.

### Current Model



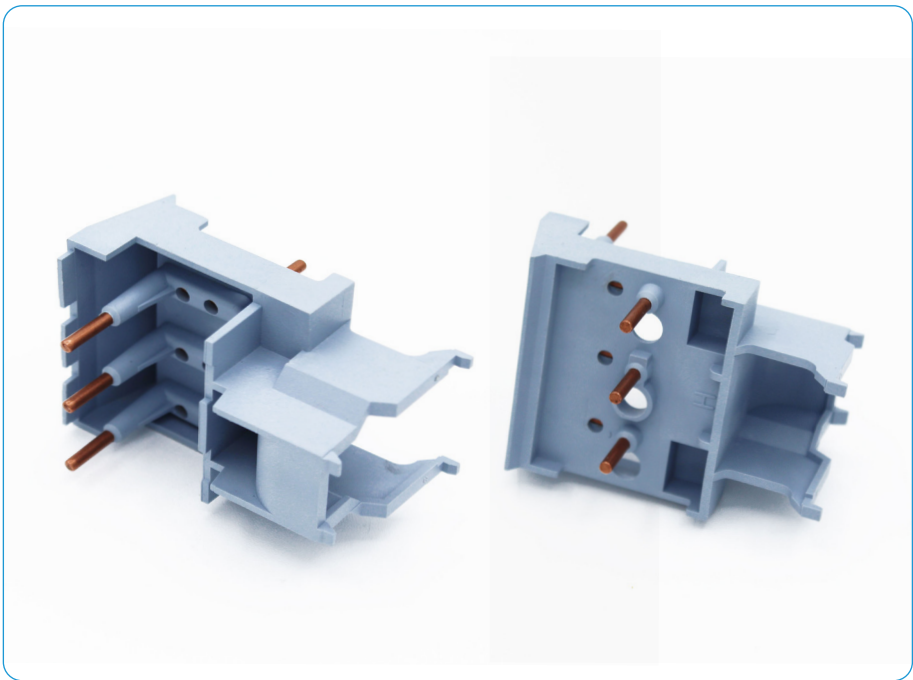
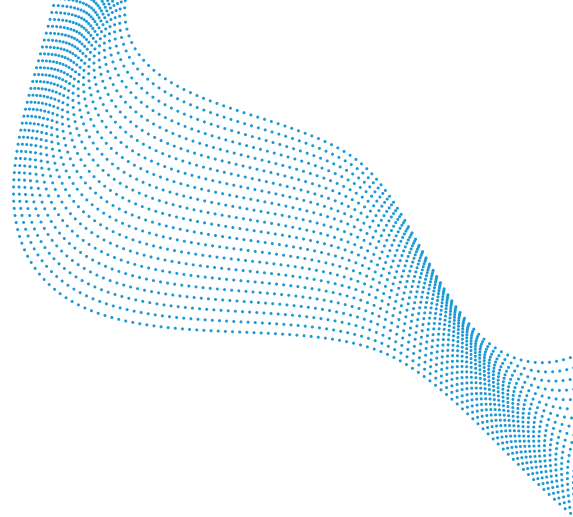
Part No.: SM 471 V3

### Product description:

This module is used on all units with compressors after May 2023. Used to lockout the compressor if the HP or LP exceeds 5 cut-outs per hour. Can be used for up to 3 compressors.

LED lights glow when lockout is activated, and the manual reset button is required to restart the compressor.

### Current Model



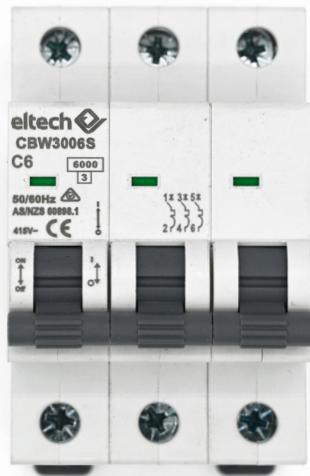
Part Name: WEG link module

#### Product description:

This link module is used to connect the contactor and the MCB (motor circuit breaker). When replacing a contactor and MCB it is recommended to replace the link modules as well.

#### Current Model





## Part Name: WEG 3 Phase Circuit Breakers

### Product description:

WEG 6kv circuit breakers used for compressors and fans in all units. Available in 6, 10, 16, 20, 25, 32, 40, 50, 63amp ratings.

### Current Model

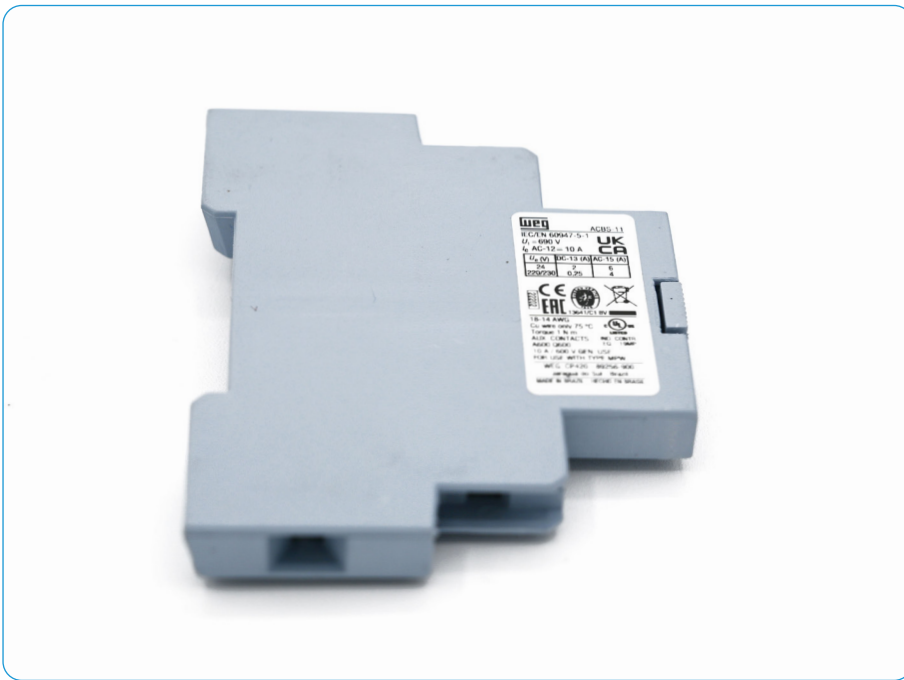


Part Name: WEG Single Pole C6 Circuit Breaker Available in 2, 4, 6, 10, 16, 20 amps

#### Product description:

Single pole circuit breaker used in control voltage circuits in the Armcor Units.

#### Current Model



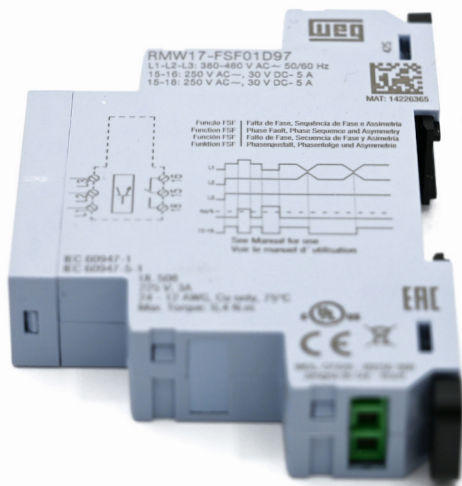
## Part No.: WEG ACBS-11 AUX Contacts

### Product description:

The WEG ACBS-11 is a set on NO and NC contacts which are used with the MCB ON Compressors to give a VFC fault output on compressor overload.

### Current Model





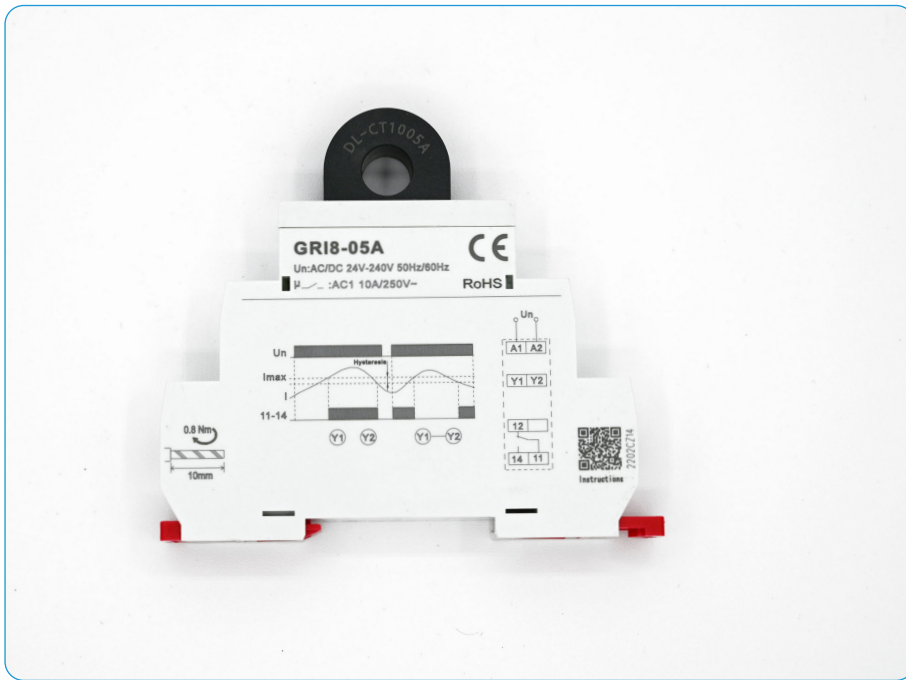
## Part No.: WEG RMW17 Phase Failure Relay

### Product description:

WEG Phase Failure relay installed on all units with compressors to ensure correct phase rotation and phase failure or voltage drop.

### Current Model

**Note:** Alternative Product GRV8-08A can be used in lieu of the WEG for a straight replacement.



## Part Name.: GR18-05A Current Switch

### Product description:

Din Rail mounted current switch used up to 20amps for fan status, requires a 24v power supply connected to A1 and A2 terminals. Has green and red indicator lights and NO and NC Volt Free Contacts.

### Current Model



## Part Name: Time Delays

Delay on Break or Delay on Make

### Product description:

DELAY ON BREAK these time delays are used on all compressors to limit the number of starts in a short time, preventing compressor damage due to short cycling.

DELAY ON MAKE these time delays are used on the Indec units to delay the fan starting before the pads are completely wet.

Each timer can be used on 24vac or 240vac. Remove the link for 240v.

### Current Model



Part No.: CCS 131-100

### Product description:

Dwyer Current Switch which gives a fan status via VFC terminals. This has green and red indicator lights. Is not DIN rail mounted and does not require a power supply.

### Current Model



## Part Name: CBG-30AV Condensor Fan Controller

### Product description:

Superseded fan pressure controller which is used to control EC Condenser Fans via a 0-10vdc signal.

This sensor is connected to the discharge line OR the liquid line via an access port with a Schrader connection, so the gauge can easily be replaced. Adjustments are through the front face protected by plastic caps.

CBG-30AV for R407c gas

CBG-50AV for R410a gas

### Current Model





Part Name: Digital Compressor Valve 010-0124-00

#### Product description:

This digital compressor valve is used with Emerson Digital Compressors only for capacity control. Must be installed the correct way with the flow of gas towards the suction line. Used in ZRD 081 and ZRD 072 or lower capacity compressors.

#### Current Model



Part No.: CWB-38- 09,16,20,25,32,40amps.

### Product description:

The CWB range of contactor is used for fixed speed compressors. All contactors used by Armcors have 24Vac coils. The range comes in 9amp, 16amp, 20amp, 25amp, 32amp and 40amp. Select the correct replacement one that suits the current draw of the compressor.

### Current Model



## Part Name: MPW-40 MCB Motor Circuit Breakers

### Product description:

Weg MCB circuit breakers are used with all fixed speed compressors and digital scroll compressors ( they are not used with VSD compressors. Available in 10-16amps, 16-25amps, 25-32amps, 32-40 amps. The MPW has adjustable amp setting to match the compressor rating and must be manually reset if the MPW trips.

### Current Model



Part Name: Single Phase C/B with Aux relay

### Product description:

Circuit Breaker with additional aux relay contact. Used in the XCM units on fans that do not have an internal overload. Aux relay is used as a fault signal, comes with NO and NC contacts.

### Current Model



## Part Name: 023 0057 01 (240v) Digital Compressor Unloading Coil

### Product description:

The digital compressor coil is used to unload the capacity through the valve on digital compressors which have an external valve only. The voltage can either be 24vac or 240v ac

### Current Model





# Fresh Air Indoors

**For more information**

W: [armcor.com.au](http://armcor.com.au)

E: [sales@armcor.com.au](mailto:sales@armcor.com.au)

P: (03) 8301 9200

109–111 Northcorp Blvd  
Broadmeadows Vic 3047

