

ERV-PAC PACKAGED AIRCONDITIONING

XEP PACKAGED AIRCONDITIONING UNIT

XEP900P3 TECHNICAL DATA



TECHNICAL SPECIFICATIONS

NOMINAL AIRFLOW		HEAT EXCHANGER		*RATED AT STANDARD CONDITIONS OF 35.5° db/24.0° wb
Supply Air (l/sec)	600 - 900	Enthalphy Media	Standard	
Return Air (l/sec)	600 - 900	Sensible Media	Available	
Fresh Air (l/sec)	600 - 900	Module Size (mm)	600 x 600 x 400D	
Condensor Air (l/sec)	540	Number of Modules	2	
Exhaust Air (l/sec)	1440	Face Velocity (m/sec)	2.12	
SUPPLY FAN		Pressure Drop (Pa)	154.2	
Fan Type	EC Plug Fan	Kw Recovered (Cooling)*	13.9	
Motor Power (Watts)	1900	Kw Recovered (Heating)*	17.4	
External Static (Pa)	250	CABINET CONSTRUCTION		
Fan Diameter	355	Casing	50mm Insulated Panel	
Number of Fans	1	Finish	Surf Mist Colourbond	
EXHAUST FAN		Insulation Value	R2.0	
Fan Type	EC Plug Fan	Side Access Panels	Included	
Motor Power (Watts)	1900	DESIGN TEMPERATURES		
External Static (Pa)	250	Ambient (DB/WB) Summer	35°C/24°C	
Fan Diameter	355	Return Air (DB/WB) Summer	24°C/17°C	
Number of Fans	1	Ambient Winter	7°C	
ELECTRICAL		Return Air Winter	21°C	
Supply Fan FLA (A)	2.6 - 2.6 - 2.6	COIL SELECTION		
Exhaust Fan FLA (A)	2.6 - 2.6 - 2.6	Indoor Coil FL x FH (mm)	740 x 400	
Compressor Current (A)	11.0 - 11.0 - 11.0	Face Velocity (m/sec)	2.4	
Nominal Run Current (A)	16.2 - 16.2 - 16.2	Outdoor Coil FL x FH (mm)	740 x 710	
Maximum Full Load (A)	21.0 - 21.0 - 21.0	Face Velocity (m/sec)	2.7	
Volt/Phase	415V/3ph	Anti-Corrosion Coil Coating	Included	
Switchboard	Yes	Drain Tray	Stainless Steel	
Circuit Breakers	Yes	REFRIGERATION *At standard design temperatures		
CONTROLS		Heating Capacity (kW)*	18	
0-10V DC (Fan Control)	Included	Cooling Capacity (kW)*	18	
24V AC Control Relays	Included	Compressor	1 - Fixed Speed	
Fan Fault Signal	Included	Refrigerant Gas	R407C	
Fan Status	Available	Expansion Device	TX Biflow Valves	
		Head Pressure Control	Included	
		OPTIONS		
		Economy Cycle	Available (XEP900P3EC)	
		Return Air Bypass Damper	Available	

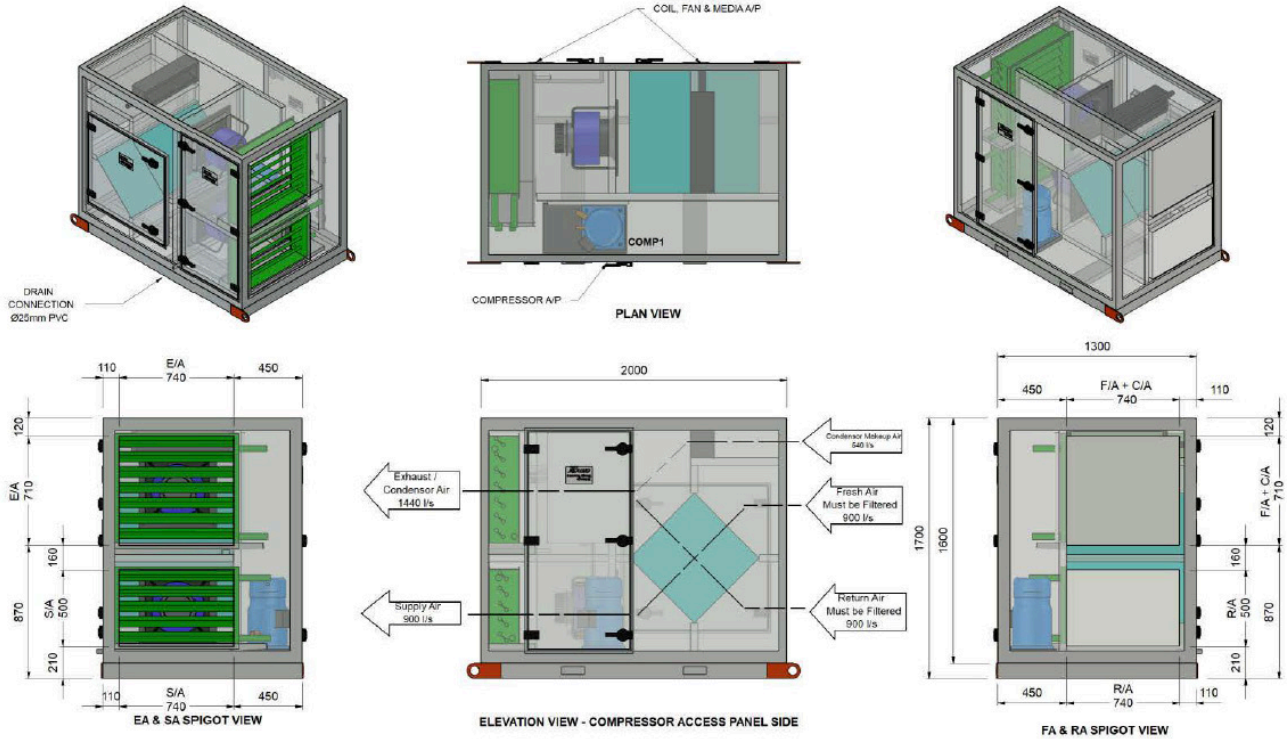
ERV-PAC PACKAGED AIRCONDITIONING

XEP PACKAGED AIRCONDITIONING UNIT

XEP900P3 TECHNICAL DATA



TECHNICAL DRAWINGS - XEP 900P3 STANDARD PAC UNIT



DIMENSION	
Height (mm)	1700
Width (mm)	1300
Length (mm)	2000
Weight (Kg)	615
Access Clearance (mm)	1200 (Fan & Media Access)
Access Clearance (mm)	1200 (Electrical Controls)

DUCT SIZES	
Supply Air (mm)	740 x 500
Return Air (mm)	740 x 500
Fresh Air/Condensor Air Inlet	740 x 710
Exhaust/Condensor Air	740 x 710
Recommended min F/A Filter size	740 x 500

COMPRESSOR PERFORMANCE DATA

COMPRESSOR CAPACITY (KW) - COOLING

RETURN AIR TEMPERATURES	OUTDOOR COIL ENTERING AIR TEMPERATURE (E.A.T) °C db											
	23		27		31		35		39		43	
24°C/17°C db/wb	Total	Sens.	Total	Sens.	Total	Sens.	Total	Sens.	Total	Sens.	Total	Sens.
	19.4	15.9	19.1	15.9	18.7	15.8	18.0	15.3	16.7	14.5	15.5	11.2

COMPRESSOR CAPACITY (KW) - HEATING

RETURN AIR TEMPERATURES	OUTDOOR COIL ENTERING AIR TEMPERATURE (E.A.T) °C db					
	-1	1	3	5	7	9
22°C	13.9	14.8	15.7	16.9	18.0	18.7

For winter operation the air on to the DX coil must be a minimum of 15°C. If this cannot be achieved, we recommend using a EDH or hot water coil to maintain the correct temperature onto the DX coil.

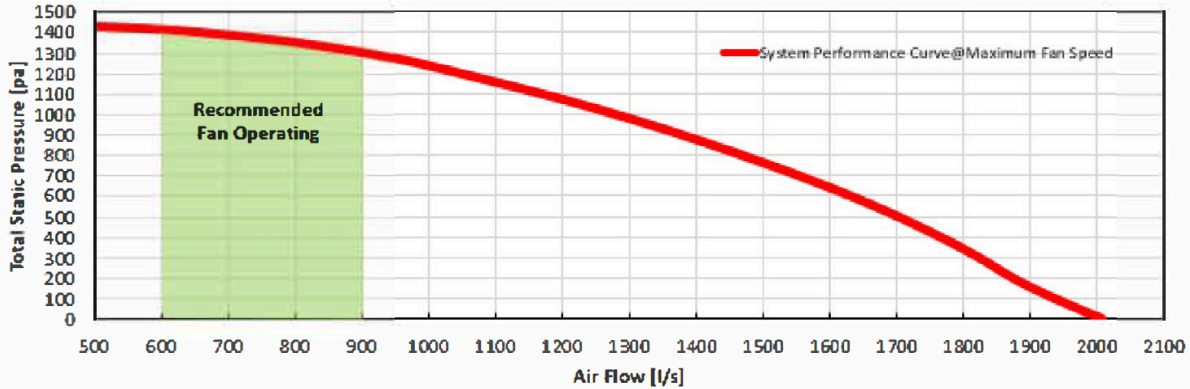
ERV-PAC PACKAGED AIRCONDITIONING

XEP PACKAGED AIRCONDITIONING UNIT

XEP900P3 TECHNICAL DATA



FAN PERFORMANCE DATA

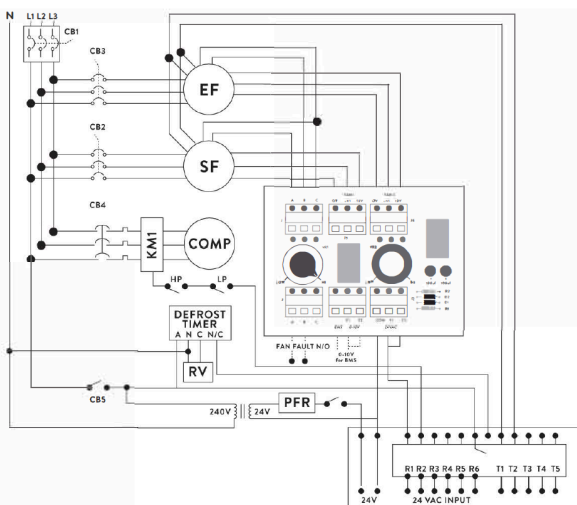


SOUND POWER LEVELS*

INLET RATING dB		OUTLET RATING dB	
63 Hz	64.3	63 Hz	66.1
125 Hz	70.1	125 Hz	70.4
250 Hz	71	250 Hz	70.2
500 Hz	69.9	500 Hz	73.7
1 K Hz	67.3	1K Hz	75.3
2K Hz	68.1	2K Hz	73.1
4K Hz	67.1	4K Hz	72.2
8K Hz	60.4	8K Hz	65.1
LwA	74.4	LwA	79.9

* Sound Power Levels @600 Pa Total Static Pressure and 900 l/s Total Air Volume.

WIRING DIAGRAM



FAN CONTROLLER

0-10V DC BMS CONNECTION or
24V AC FAN SPEED VIA POTS

STANDARD INCLUSIONS

- CB CIRCUIT BREAKERS
- R1 TIME DELAY RELAY
- PFR PHASE FAILURE RELAY
- RV REVERSING VALVE
- HP HIGH PRESSURE
- LP LOW PRESSURE
- MCB COMPRESSOR OVERLOAD
- CCH COMP. SUMP HEATER

OPTIONS

- CSR CURRENT SENSING RELAY (T1 T2)
- T3 T4 0-10V DIGITAL COMP.

Designed and manufactured in Australia

A: 109-111 Northcorp Blvd T: 03 8301 9200
Broadmeadows VIC 3047 E: sales@armcor.com.au
www.armcor.com.au