

ERV-PAC PACKAGED AIRCONDITIONING

XEP PACKAGED AIRCONDITIONING UNIT

XEP3000P3 TECHNICAL DATA



TECHNICAL SPECIFICATIONS

NOMINAL AIRFLOW

Supply Air (l/sec)	3000
Return Air (l/sec)	3000
Fresh Air (l/sec)	3000
Condensor Air (l/sec)	2440
Exhaust Air (l/sec)	5440

SUPPLY FAN

Fan Type	EC Plug Fan
Motor Power (Watts)	1900
External Static (Pa)	250
Fan Diameter	355
Number of Fans	2

EXHAUST FAN

Fan Type	EC Plug Fan
Motor Power (Watts)	2825
External Static (Pa)	250
Fan Diameter	450
Number of Fans	2

ELECTRICAL

Supply Fan FLA (A)	5.2 - 5.2 - 5.2
Exhaust Fan FLA (A)	8.6 - 8.6 - 8.6
Compressor Current (A)	34.0 - 34.0 - 34.0
Nominal Run Current (A)	47.8 - 47.8 - 47.8
Maximum Full Load (A)	62.0 - 62.0 - 62.0
Volt/Phase	415V/3ph
Switchboard	Yes
Circuit Breakers	Yes

CONTROLS

0-10V DC (Fan Control)	Included
24V AC Control Relays	Included
Fan Fault Signal	Included
Fan Status	Available

HEAT EXCHANGER

*RATED AT STANDARD CONDITIONS OF 35.5° db/24.0° wb

Enthalphy Media	Standard
Sensible Media	Available
Module Size (mm)	800 x 800 x 400D
Number of Modules	6
Face Velocity (m/sec)	1.75
Pressure Drop (Pa)	183.3
Kw Recovered (Cooling)*	48.6
Kw Recovered (Heating)*	60.9

CABINET CONSTRUCTION

Casing	50mm Insulated Panel
Finish	Surf Mist Colourbond
Insulation Value	R2.0
Side Access Panels	Included

DESIGN TEMPERATURES

Ambient (DB/WB) Summer	35°C/24°C
Return Air (DB/WB) Summer	24°C/17°C
Ambient Winter	7°C
Return Air Winter	21°C

COIL SELECTION

Indoor Coil FL x FH (mm)	2340 x 635
Face Velocity (m/sec)	2.0
Outdoor Coil FL x FH (mm)	2340 x 865
Face Velocity (m/sec)	2.6
Anti-Corrosion Coil Coating	Included
Drain Tray	Stainless Steel

REFRIGERATION *At standard design temperatures

Heating Capacity (kW)*	68
Cooling Capacity (kW)*	68
Compressor 1	Fixed Speed
Compressor 2	Fixed Speed
Refrigerant Gas	R407C
Expansion Device	TX Biflow Valves
Head Pressure Control	Included

OPTIONS

Economy Cycle	Available (XEP3000P3EC)
Return Air Bypass Damper	Available

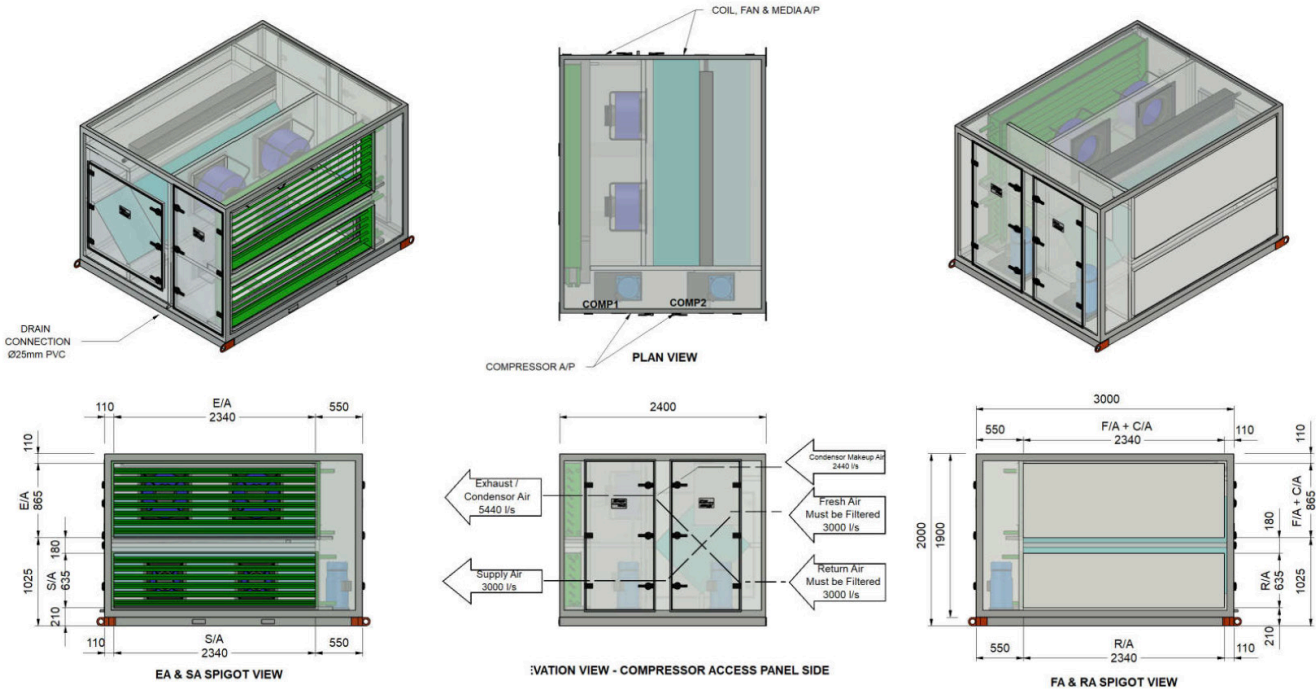
ERV-PAC PACKAGED AIRCONDITIONING

XEP PACKAGED AIRCONDITIONING UNIT

XEP3000P3 TECHNICAL DATA



TECHNICAL DRAWINGS - XEP 3000P3 STANDARD PAC UNIT



DIMENSION		DUCT SIZES	
Height (mm)	2000	Supply Air (mm)	2340 x 635
Width (mm)	3000	Return Air (mm)	2340 x 635
Length (mm)	2400	Fresh Air/Condensor Air Inlet	2340 x 865
Weight (Kg)	1615	Exhaust/Condensor Air	2340 x 865
Access Clearance (mm)	1200 (Fan & Media Access)	Recommended min F/A Filter size	2100 x 600
Access Clearance (mm)	1200 (Electrical Controls)		

COMPRESSOR PERFORMANCE DATA

COMPRESSOR CAPACITY (KW) - COOLING

RETURN AIR TEMPERATURES	OUTDOOR COIL ENTERING AIR TEMPERATURE (E.A.T) °C db											
	23		27		31		35		39		43	
24°C/17°C db/wb	Total	Sens.	Total	Sens.	Total	Sens.	Total	Sens.	Total	Sens.	Total	Sens.
	73.4	58.2	72.1	58.2	70.7	57.7	68.0	56.0	63.2	53.2	58.5	40.9

COMPRESSOR CAPACITY (KW) - HEATING

RETURN AIR TEMPERATURES	OUTDOOR COIL ENTERING AIR TEMPERATURE (E.A.T) °C db					
	-1	1	3	5	7	9
22°C	52.4	55.8	59.2	63.9	68.0	70.7

For winter operation the air on to the DX coil must be a minimum of 15°C. If this cannot be achieved, we recommend using a EDH or hot water coil to maintain the correct temperature onto the DX coil.

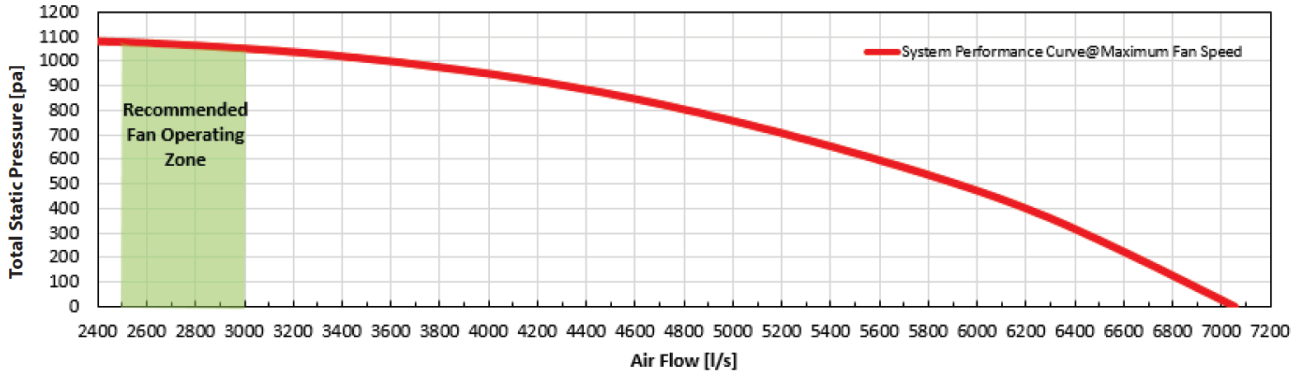
ERV-PAC PACKAGED AIRCONDITIONING

XEP PACKAGED AIRCONDITIONING UNIT

XEP3000P3 TECHNICAL DATA



FAN PERFORMANCE DATA

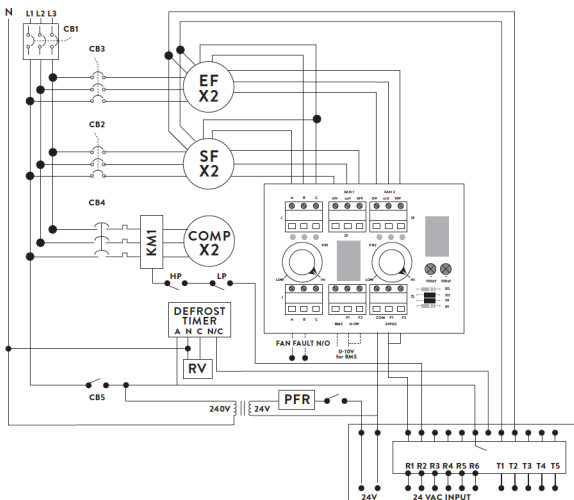


SOUND POWER LEVELS*

INLET RATING dB		OUTLET RATING dB	
63 Hz	70	63 Hz	71.9
125 Hz	77.2	125 Hz	78.9
250 Hz	76.5	250 Hz	77.2
500 Hz	73.2	500 Hz	78.4
1 K Hz	71.4	1K Hz	80
2K Hz	70.8	2K Hz	76.8
4K Hz	67.8	4K Hz	72.6
8K Hz	64.6	8K Hz	68.3
LwA	77.5	LwA	83.7

* Sound Power Levels @650 Pa Total Static Pressure and 3000 l/s Total Air Volume.

WIRING DIAGRAM



FAN CONTROLLER

0-10V DC BMS CONNECTION or
24V AC FAN SPEED VIA POTS

STANDARD INCLUSIONS

CB CIRCUIT BREAKERS
R1 TIME DELAY RELAY
PFR PHASE FAILURE RELAY
RV REVERSING VALVE
HP HIGH PRESSURE
LP LOW PRESSURE
MCB COMPRESSOR OVERLOAD
CCH COMP. SUMP HEATER

OPTIONS

CSR CURRENT SENSING RELAY (T1 T2)
T3 T4 0-10V DIGITAL COMP.

Designed and manufactured in Australia

A: 109-111 Northcorp Blvd T: 03 8301 9200
Broadmeadows VIC 3047 E: sales@armcor.com.au
www.armcor.com.au