

ROTARY HEAT WHEEL ERV

EXTERNAL MOUNT

REM3500P3 TECHNICAL DATA



TECHNICAL SPECIFICATIONS

NOMINAL AIRFLOW		ROTARY HEAT WHEEL	
Supply Air (l/sec)	3000 - 3500	Enthalpy Heat Wheel	Standard
Exhaust Air (l/sec)	3000 - 3500	Sensible Heat Wheel	Available
Return Air (l/sec)	3000 - 3500	Wheel Diameter (mm)	2090
Fresh Air (l/sec)	3000 - 3500	Efficiency %	84.4
SUPPLY FAN		Size L x W x D (mm)	2250 x 2250 x 440
Fan Type	EC Plug	Media Face Velocity (m/sec)	2.07
Motor Power (Watts)	5700	Pressure Drop (Pa)	152
External Static (Pa)	250	Kw Recovered (Cooling)*	53.65
Fan Diameter	500	Kw Recovered (Heating)*	90.02
Number of Fans	1	CABINET CONSTRUCTION	
EXHAUST FAN		Casing	50mm Panel
Fan Type	EC Plug	Insulation Value	R2.0
Motor Power (Watts)	5700	Side Access Panels	Included
External Static (Pa)	250	FILTERS	
Fan Diameter	500	Type	Deep Bed Filters F5
Number of Fans	1	Size L x W x D (mm)	610 x 610 x 380
ELECTRICAL		Number of Filters	6
Supply Fan FLA (A)	0.9 - 0.9 - 0.9	Size L x W x D (mm)	610 x 305 x 380
Exhaust Fan FLA (A)	0.9 - 0.9 - 0.9	Number of Filters	6
Rotary Wheel (A)	0.7 - 0.7 - 0.7	OPTIONS	
Nominal Run Current (A)	18.7 - 18.7 - 18.7	Chilled Water/ Hot Water Coil	Available (Model REC3500)
Volt/Phase	415V/3ph	Evaporative Cooling Pad	Available (Model REI3500)
Switchboard	Yes	Economy Cycle	Available
Circuit Breakers	Yes	Return Air Bypass	Available
CONTROLS		75mm Panel Casing	Available
0-10V DC (Fan Control)	Included	Corrosion Resistant Lining	Available
24V AC Enable Heat Wheel	Included	Stainless Steel Drain Tray	Available
Heat Wheel VSD	Available		

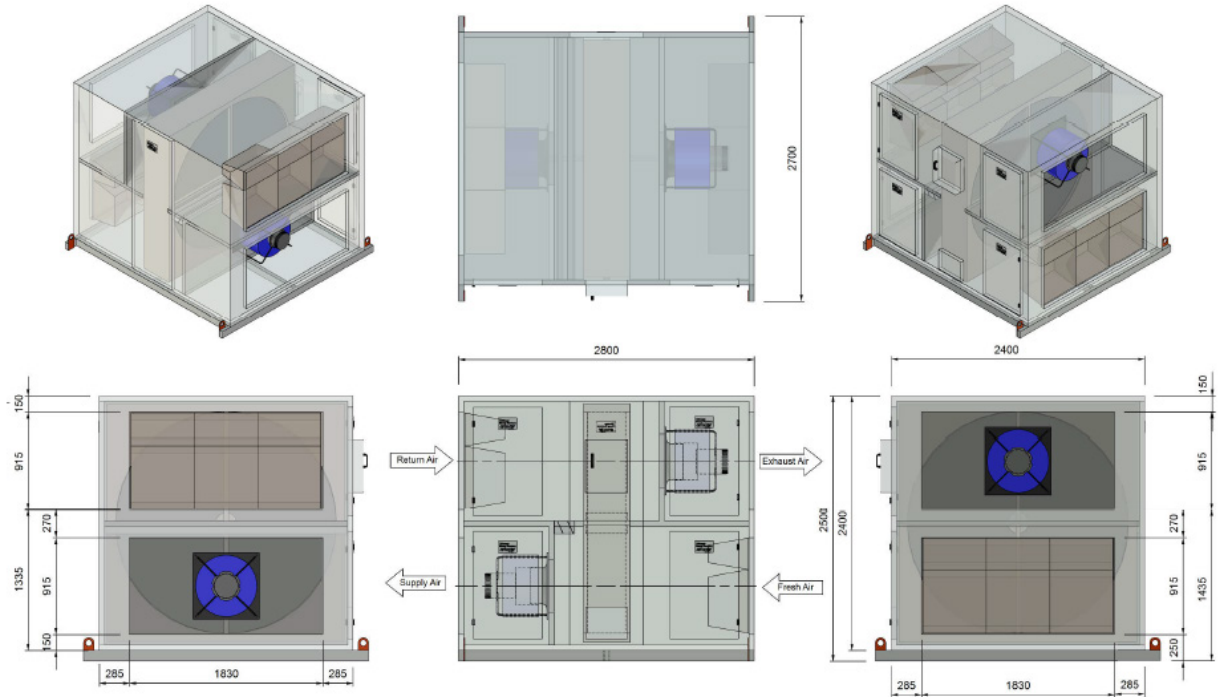
ROTARY HEAT WHEEL ERV

EXTERNAL MOUNT

REM3500P3 TECHNICAL DATA



TECHNICAL DRAWINGS



DIMENSIONS	
Height (mm)	2500
Width (mm)	2400
Length (mm)	2800
Weight (Kg)	1470
Access Clearance (mm)	1200 (Controls & Filter Access)
Access Clearance (mm)	300

DUCT SIZES	
Exhaust Air (mm)	1830 x 915
Return Air (mm)	1830 x 915
Supply Air (mm)	1830 x 915
Fresh Air (mm)	1830 x 915

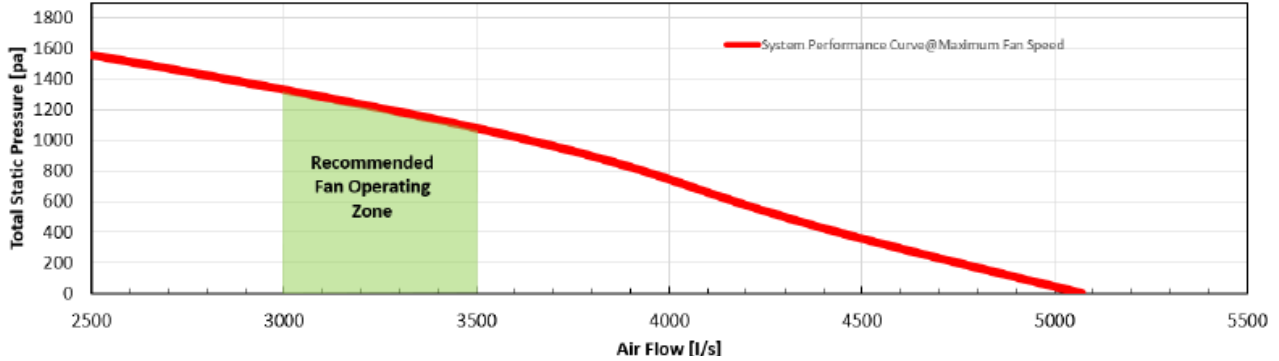
ROTARY HEAT WHEEL ERV

EXTERNAL MOUNT

REM3500P3 TECHNICAL DATA



FAN PERFORMANCE DATA

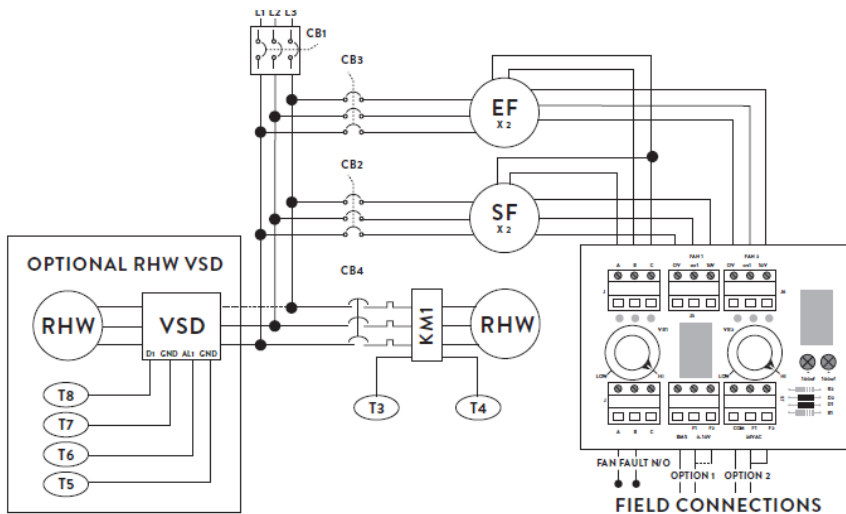


SOUND POWER LEVELS*

INLET RATING dB		OUTLET RATING dB	
63 Hz	56.3	63 Hz	57.5
125 Hz	73.6	125 Hz	65.7
250 Hz	73.8	250 Hz	68.2
500 Hz	68.1	500 Hz	69.7
1 K Hz	70.1	1K Hz	68.6
2K Hz	70.8	2K Hz	66.4
4K Hz	83.3	4K Hz	74.2
8K Hz	69.2	8K Hz	61.2
LwA	84.9	LwA	77.2

* Sound Power Levels @550 Pa Total Static Pressure and 3500 l/s Total Air Volume.

WIRING DIAGRAM



- OPTION 1**
0-10V DC CONTROL VIA CONNECTION TO BMS
- OPTION 2**
24V AC ENABLE REGULATE FAN SPEED VIA POTS

Designed and manufactured in Australia

A: 109-111 Northcorp Blvd
Broadmeadows VIC 3047
www.armcor.com.au

T: 03 8301 9200
E: sales@armcor.com.au