

ROTARY HEAT WHEEL ERV

EXTERNAL MOUNT



REM6000P3 TECHNICAL DATA

TECHNICAL SPECIFICATIONS

NOMINAL AIRFLOW		ROTARY HEAT WHEEL	
Supply Air (l/sec)	6000	Enthalphy Heat Wheel	Standard
Exhaust Air (l/sec)	6000	Sensible Heat Wheel	Available
Return Air (l/sec)	6000	Wheel Diameter (mm)	2 x 2090
Fresh Air (l/sec)	6000	Efficiency %	84.4
SUPPLY FAN		Size L x W x D (mm)	2250 x 2250 x 440
Fan Type	EC Plug	Media Face Velocity (m/sec)	2.07
Fan Motor	EC Motor	Pressure Drop (Pa)	152
Motor Power (Watts)	2825	Kw Recovered (Cooling)*	107.3
External Static (Pa)	250	Kw Recovered (Heating)*	180.04
Fan Diameter	500	CABINET CONSTRUCTION	
Number of Fans	3	Casing	50mm Panel
EXHAUST FAN		Insulation Value	R2.0
Fan Type	EC Plug	Side Access Panels	Included
Fan Motor	EC Motor	FILTERS	
Motor Power (Watts)	2825	Type	Deep Bed Filters F5
External Static (Pa)	250	Size L x W x D (mm)	610 x 610 x 380
Fan Diameter	500	Number of Filters	10
Number of Fans	3	Size L x W x D (mm)	610 x 305 x 380
ELECTRICAL		Number of Filters	10
Supply Fan FLA (A)	12.9-12.9-12.9	OPTIONS	
Exhaust Fan FLA (A)	12.9-12.9-12.9	Chilled Water/Hot Water Coil	Available (Model REC6000)
Rotary Wheel (A)	1.4-1.4-1.4	Evaporative Cooling Pad	Available (Model REI6000)
Nominal Run Current	27.2-27.2-27.2	Economy Cycle	Available
Volt/Phase	415V/3ph	Return Air Bypass	Available
Switchboard	Yes	75mm Panel Casing	Available
Circuit Breakers	Yes	Corrosion Resistant Lining	Available
CONTROLS		Stainless Steel Drain Tray	Available
0-10V DC (Fan Control)	Included		
24V AC Enable Heat Wheel	Included		
Heat Wheel VSD	Included		

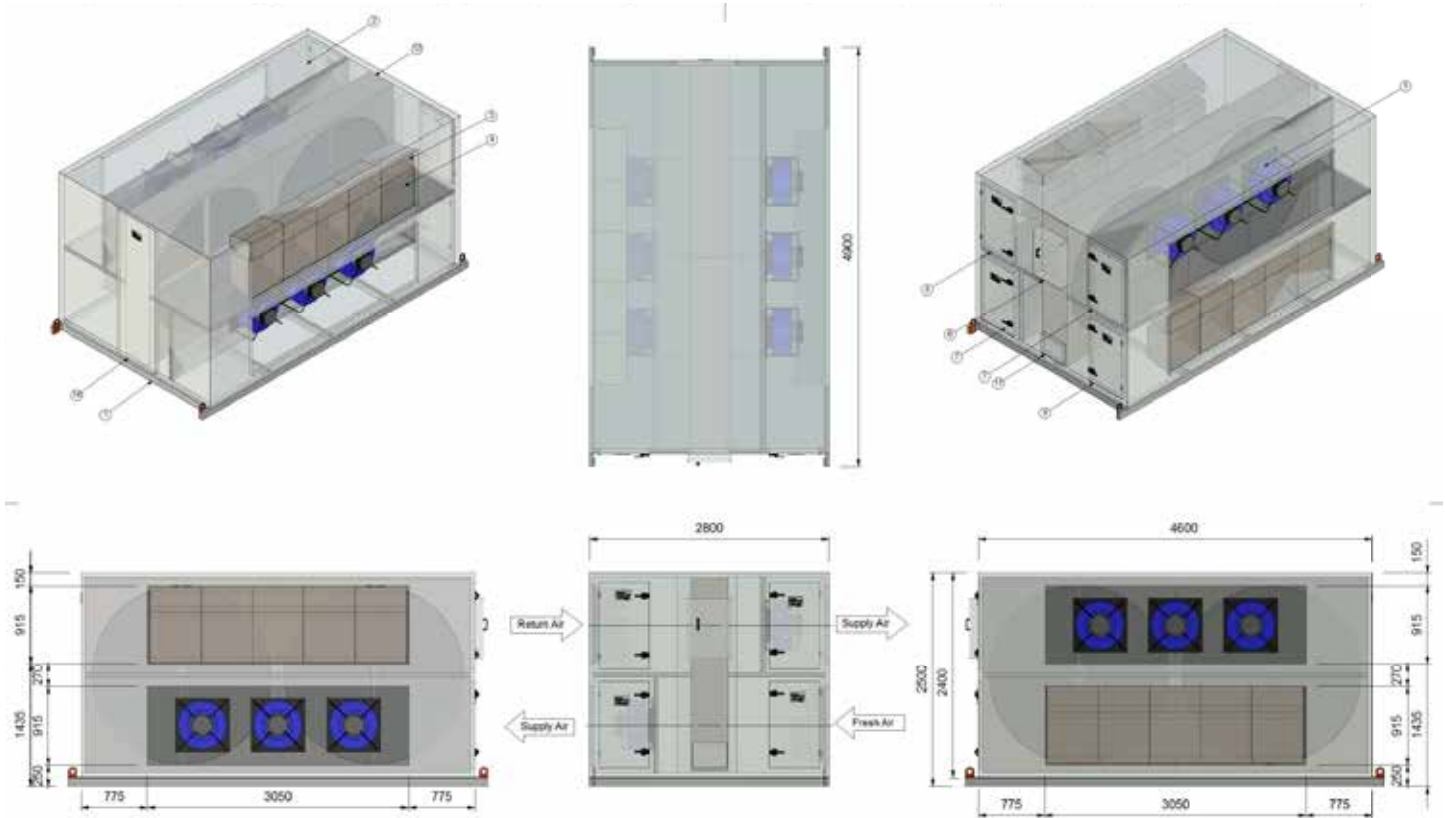
ROTARY HEAT WHEEL ERV

EXTERNAL MOUNT

REM6000P3 TECHNICAL DATA



TECHNICAL DRAWINGS



DIMENSIONS	
Height (mm)	2500
Width (mm)	4600
Length (mm)	2800
Weight (Kg)	3320
Access Clearance (mm)	1200 (Controls & Filter Access)
Access Clearance (mm)	300

DUCT SIZES	
Exhaust Air (mm)	3050 x 915
Return Air (mm)	3050 x 915
Supply Air (mm)	3050 x 915
Fresh Air (mm)	3050 x 915

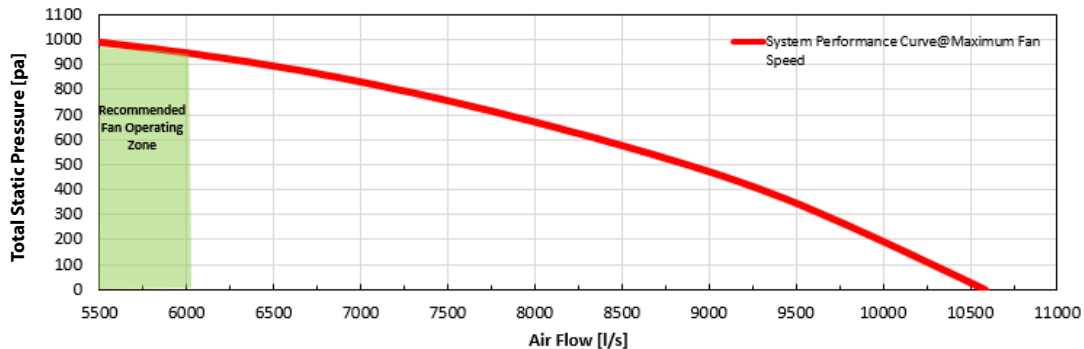
ROTARY HEAT WHEEL ERV

EXTERNAL MOUNT

REM6000P3 TECHNICAL DATA



FAN PERFORMANCE DATA

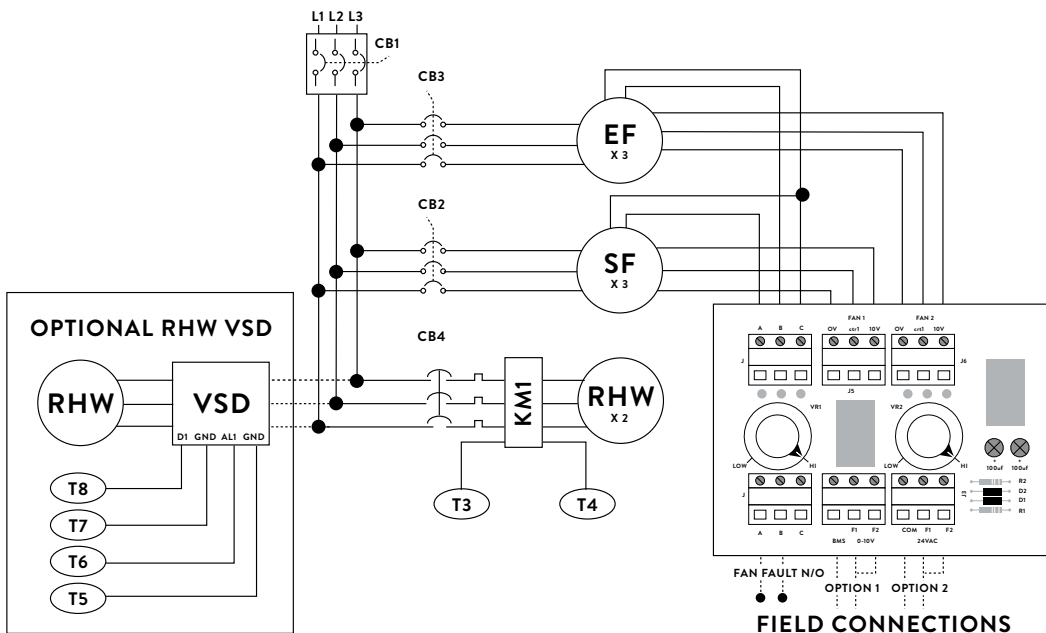


SOUND POWER LEVELS*

INLET RATING dB		OUTLET RATING dB	
63 Hz	69.2	63 Hz	70.8
125 Hz	73.8	125 Hz	75.3
250 Hz	75.8	250 Hz	76.4
500 Hz	72.6	500 Hz	78
1K Hz	70.7	1K Hz	79.4
2K Hz	70.4	2K Hz	76.3
4K Hz	68.3	4K Hz	72.9
8K Hz	64	8K Hz	67.5
LwA	77.1	LwA	83.2

* Sound Power Levels @ 550 Pa Total Static Pressure and 6000 l/s Total Air Volume.

WIRING DIAGRAM



OPTION 1

0-10V DC CONTROL
VIA CONNECTION TO BMS

OPTION 2

24V AC ENABLE
REGULATE FAN SPEED
VIA POTS

Designed and manufactured in Australia

Armcor Air Solutions

109-111 Northcorp Blvd, Broadmeadows 3047

P 1800 244 556 E sales@armcor.com.au

www.armcor.com.au

