

ROTARY HEAT WHEEL ERV

EXTERNAL MOUNT



REM1700P3 TECHNICAL DATA

TECHNICAL SPECIFICATIONS

NOMINAL AIRFLOW		ROTARY HEAT WHEEL	
Supply Air (l/sec)	1300 - 1700	Enthalphy Heat Wheel	Standard
Exhaust Air (l/sec)	1300 - 1700	Sensible Heat Wheel	Available
Return Air (l/sec)	1300 - 1700	Wheel Diameter (mm)	1630
Fresh Air (l/sec)	1300 - 1700	Efficiency %	84.9
SUPPLY FAN		Size L x W x D (mm)	1750 x 1750 x 400
Fan Type	EC Plug	Media Face Velocity (m/sec)	1.65
Fan Motor	EC Motor	Pressure Drop (Pa)	96
Motor Power (Watts)	2825	Kw Recovered (Cooling)*	26.06
External Static (Pa)	250	Kw Recovered (Heating)*	43.84
Fan Diameter	500	CABINET CONSTRUCTION	
Number of Fans	1	Casing	50mm Panel
EXHAUST FAN		Insulation Value	R2.0
Fan Type	EC Plug	Side Access Panels	Included
Fan Motor	EC Motor	FILTERS	
Motor Power (Watts)	2825	Type	Deep Bed Filters F5
External Static (Pa)	250	Size L x W x D (mm)	610 x 610 x 380
Fan Diameter	500	Number of Filters	4
Number of Fans	1	OPTIONS	
ELECTRICAL		Chilled Water/Hot Water Coil	Available (Model REC1700)
Supply Fan FLA (A)	4.3-4.3-4.3	Evaporative Cooling Pad	Available (Model REI1700)
Exhaust Fan FLA (A)	4.3-4.3-4.3	Economy Cycle	Available
Rotary Wheel (A)	0.7-0.7-0.7	Return Air Bypass	Available
Nominal Run Current	9.3-9.3-9.3	75mm Panel Casting	Available
Volt/Phase	415V/3ph	Corrosion Resistant Lining	Available
Switchboard	Yes	Stainless Steel Drain Tray	Available
Circuit Breakers	Yes		
CONTROLS			
0-10V DC (Fan Control)	Included		
24V AC Enable Heat Wheel	Included		
Heat Wheel VSD	Included		

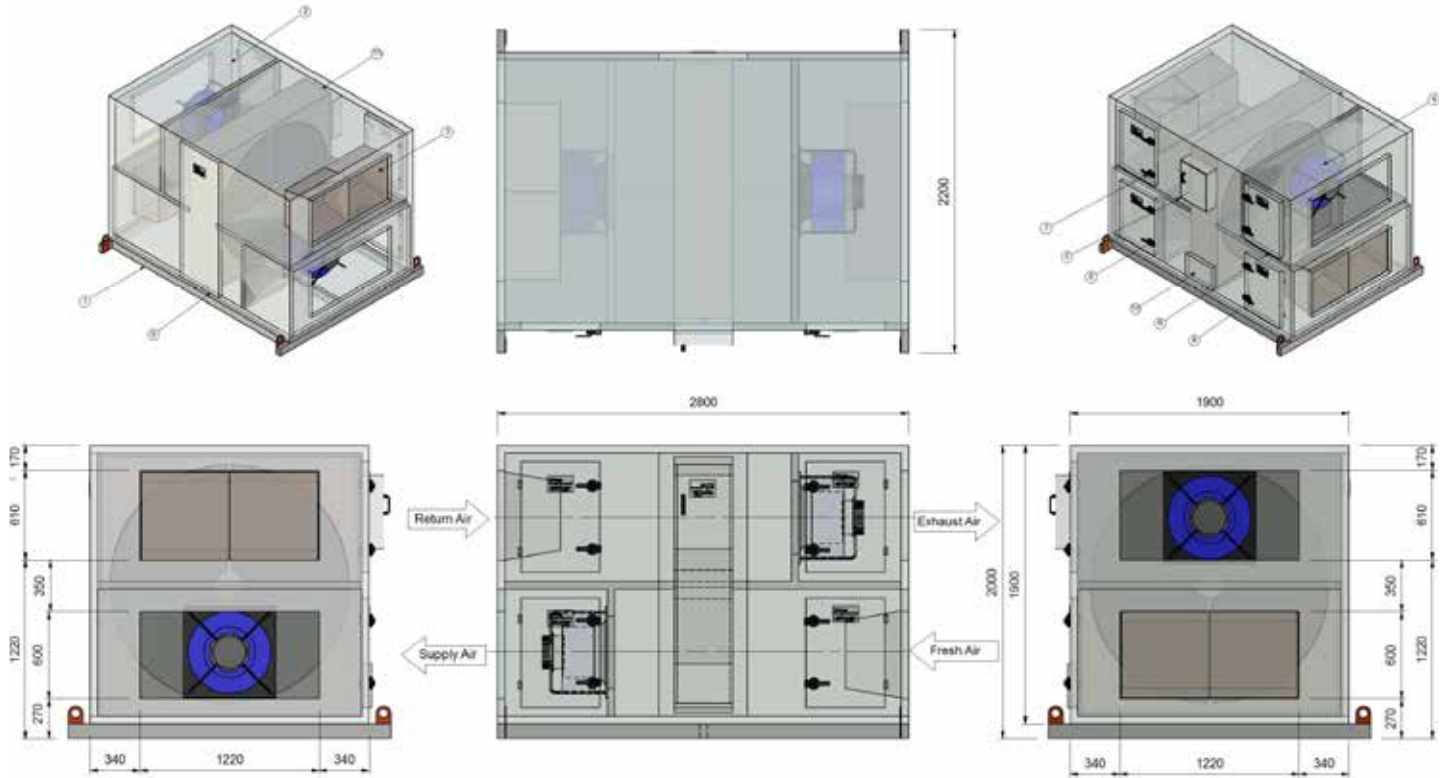
ROTARY HEAT WHEEL ERV

EXTERNAL MOUNT

REM1700P3 TECHNICAL DATA



TECHNICAL DRAWINGS



DIMENSIONS

Height (mm)	2000
Width (mm)	1900
Length (mm)	2800
Weight (Kg)	970
Access Clearance (mm)	800 (Controls & Filter Access)
Access Clearance (mm)	300

DUCT SIZES

Exhaust Air (mm)	1220 x 610
Return Air (mm)	1220 x 610
Supply Air (mm)	1220 x 610
Fresh Air (mm)	1220 x 610

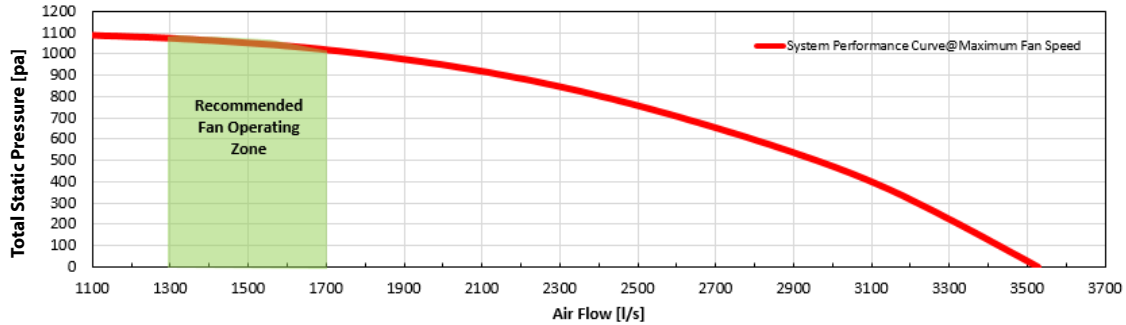
ROTARY HEAT WHEEL ERV

EXTERNAL MOUNT

REM1700P3 TECHNICAL DATA



FAN PERFORMANCE DATA

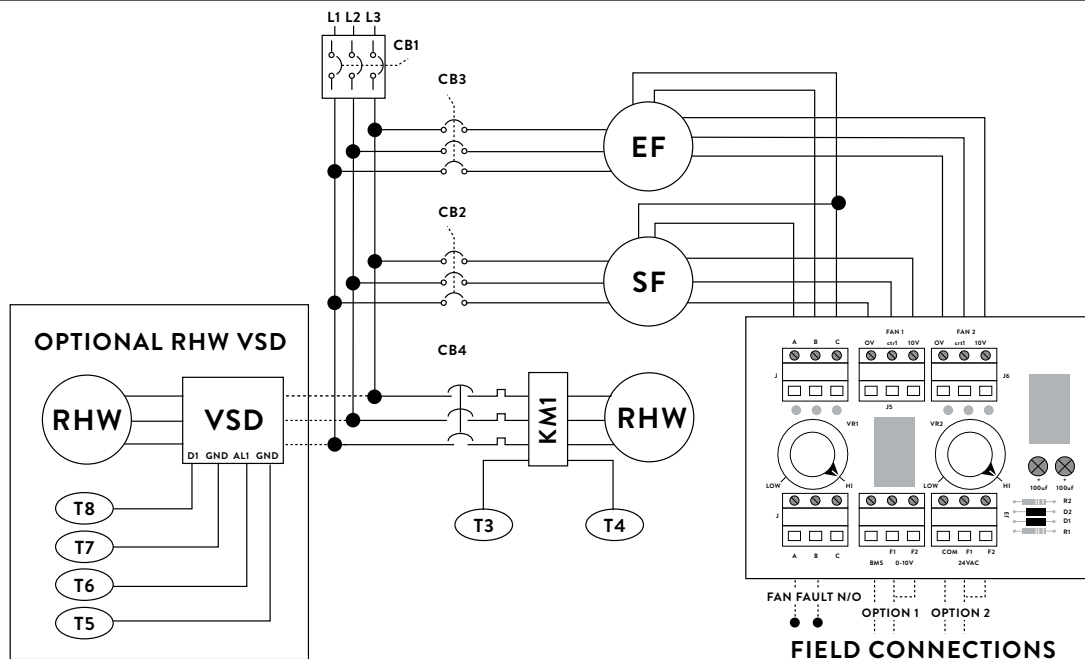


SOUND POWER LEVELS*

INLET RATING dB		OUTLET RATING dB	
63 Hz	66.9	63 Hz	69.5
125 Hz	74.6	125 Hz	75.9
250 Hz	74.3	250 Hz	74.8
500 Hz	70.8	500 Hz	76.8
1K Hz	69.8	1K Hz	78.3
2K Hz	69.1	2K Hz	75
4K Hz	66.1	4K Hz	70.9
8K Hz	62.5	8K Hz	66.2
LwA	75.7	LwA	81.9

* Sound Power Levels @ 550 Pa Total Static Pressure and 1700 l/s Total Air Volume.

WIRING DIAGRAM



- OPTION 1**
0-10V DC CONTROL
VIA CONNECTION TO BMS
- OPTION 2**
24V AC ENABLE
REGULATE FAN SPEED
VIA POTS

Designed and manufactured in Australia

Armcor Air Solutions

109-111 Northcorp Blvd, Broadmeadows 3047

P 1800 244 556 E sales@armcor.com.au

www.armcor.com.au

